

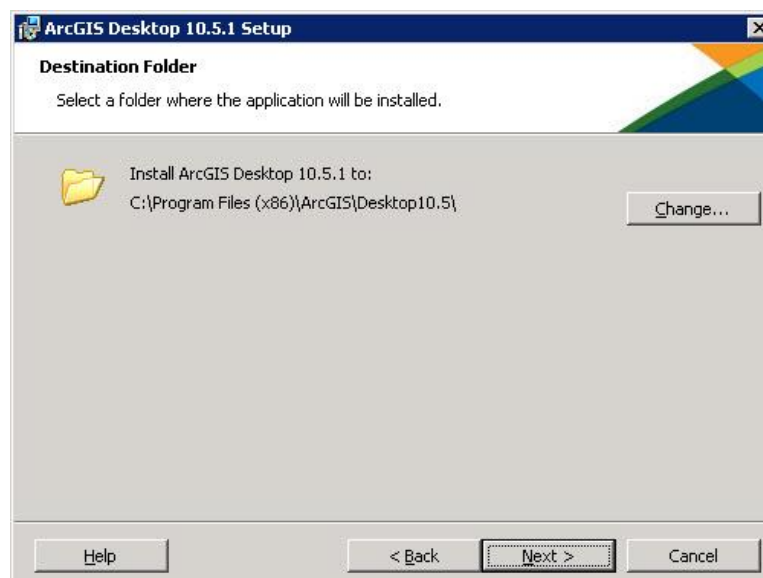
## Installing ArcGIS Desktop – Single Use License

With ArcGIS Desktop Single Use License, core products and extensions are authorized locally on the end-user machine.

### Install ArcGIS Desktop

Before installing ArcGIS Desktop, verify that your computer meets the [system requirements](#).

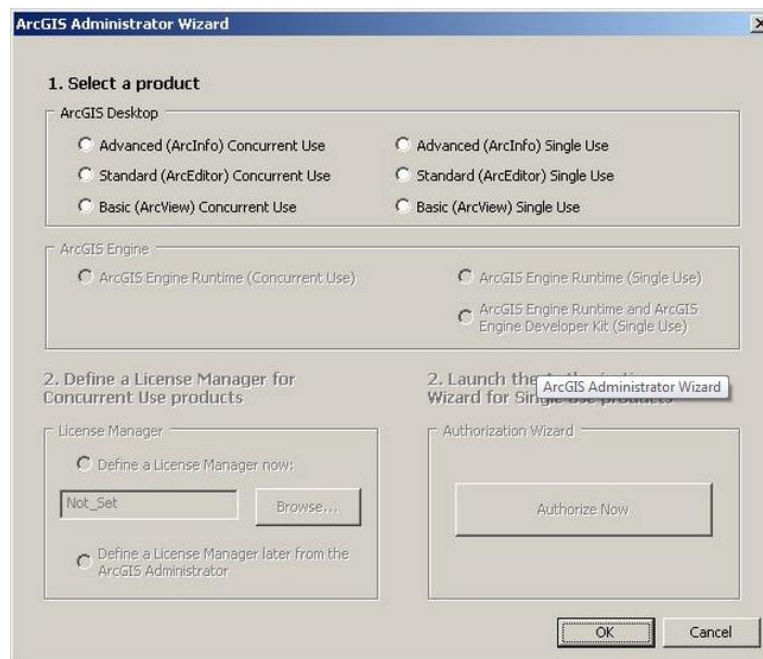
1. Launch the ArcGIS Desktop setup by clicking setup.exe from the installation program.
2. During the installation, read the license agreement and accept it, or exit if you do not agree with the terms.
3. The setup program provides an option for a Complete installation, which installs the applications, style files, templates, and optionally licensed extensions. The Custom installation option allows you to choose specific installation components.
4. The installation location will be identified in this dialog box or in the custom dialog box, if a custom option was selected.



5. If Python is selected for installation, you must choose the installation location or select the default.
6. When the setup is complete, the ArcGIS Administrator Wizard is displayed, allowing you to configure a Single Use authorization.

## Authorize ArcGIS Desktop License

1. In the ArcGIS Administrator wizard, select your ArcGIS Desktop product, click Authorize Now.



**NOTE:** The ArcGIS Administrator Wizard is only launched the first time you install ArcGIS Desktop. After you have completed the ArcGIS Administrator Wizard, you can access the ArcGIS Administrator by navigating to Start > Programs > ArcGIS > ArcGIS Administrator.

- In the Authorization Options, choose the option *I have received an authorization from Esri and am now ready to finish the authorization process*, and then browse to the location of the provisioning file (\*.prvs), click Next.

**Authorization Options**  
You must authorize the license server prior to use. Select from the options below.

Authorization Options

- I need to authorize licenses on my license server.
- I have already authorized core licenses and need to authorize additional extensions.
- I have received an authorization file from Esri and am now ready to finish the authorization process.

Product to be Authorized

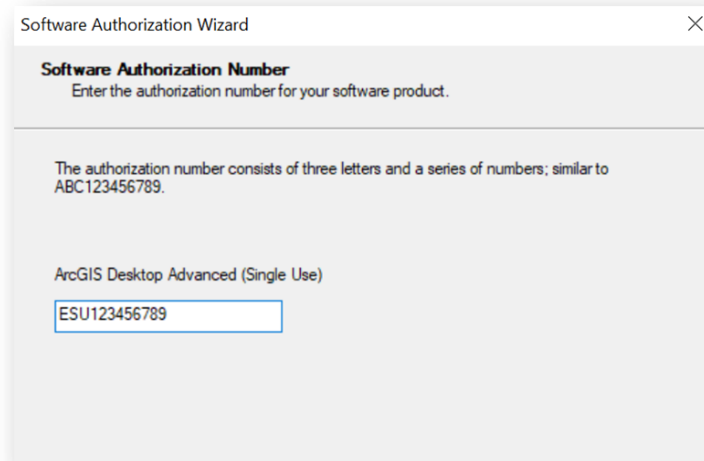
- ArcGIS for Desktop
- ArcGIS Engine
- Esri CityEngine

- In the next window, choose the *Authorize with Esri now using the Internet* option. Click Next.

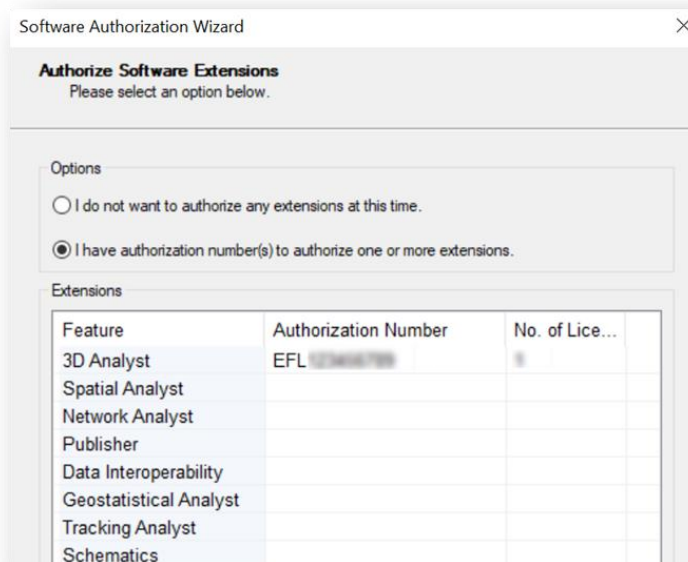
**Authorization Method**  
Select the method you want to use to authorize the software.

- Authorize with Esri now using the Internet.  
(This automatic method is the easiest way to authorize. It requires an Internet connection.)
- Authorize at Esri's website or by email to receive your authorization file.
- Authorize your software from a local license server.

4. Complete the Authorization Information and click Next.
5. Complete the additional Authorization Information by selecting the appropriate choices from the drop-down menus and click Next.
6. Enter the Software Authorization Number, and click Next



7. In the Authorize Software Extensions, if applicable, select *I have authorization number(s) to authorize one or more extensions*. Otherwise, select *I do not want to authorize any extensions at this time*. Click Next.



The authorization process will now begin. A stable Internet connection is strongly recommended for the license authorization process.

8. Click Finish after the licenses have successfully been authorized.